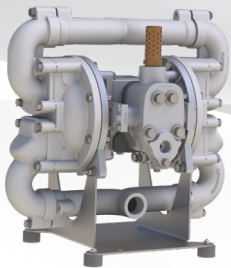
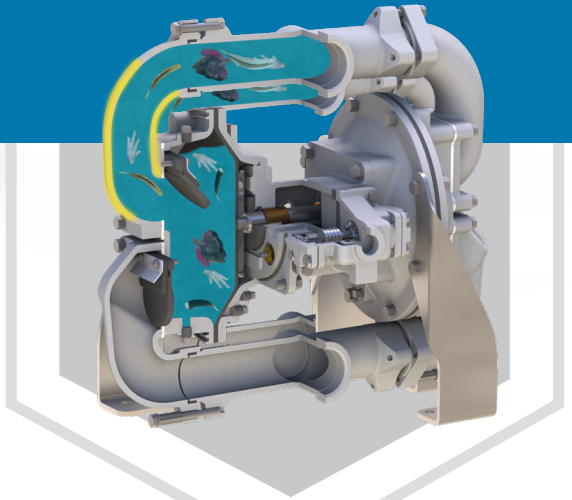


SANDPIPER BLOOD PUMP TECHNICAL DATA SHEET

DESCRIPTION

The SANDPIPER "BLOOD PUMP" is a range of Heavy Duty Flap (HDF) Pumps configured for abrasive, viscous, and solids-laden Meat and Poultry processing applications such as blood and animal waste transfer

PRODUCT RANGE & PERFORMANCE DATA



HDF1/HDF25

SUCTION/DISCHARGE PORT SIZE

- HDF1: 1" (25.4mm) NPT(F)
- HDF25: 1" (25.4mm) BSP Tapered

CAPACITY

- 0 to 70 gallons per minute
(0 to 265 liters per minute)

AIR DISTRIBUTION VALVE

- No-lube, no-stall design

SOLIDS-HANDLING

- Up to 1 in. (25.4mm)

HEADS UP TO

- 125 psi or 289 ft. of water
(8.8 Kg/cm² or 88 meters)

MAXIMUM OPERATING PRESSURE

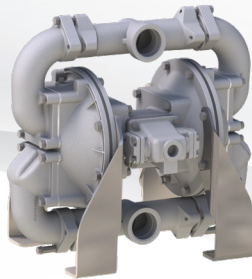
- 125 psi (8.6 bar)

DISPLACEMENT/STROKE

- .10 Gallon / .38 liter

SHIPPING WEIGHT

- Aluminum 48 lbs. (21kg)
- Stainless Steel 79 lbs. (36kg)



HDF2/HDF50

SUCTION/DISCHARGE PORT SIZE

- HDF2: 2" (50mm) NPT(F)
- HDF50: 2" (50mm) BSP (T)

CAPACITY

- 0 to 208 gallons per minute
(0 to 787 liters per minute)

AIR DISTRIBUTION VALVE

- No-lube, no-stall design

SOLIDS-HANDLING

- Up to 1.8in. (45mm)

HEADS UP TO

- 125 psi or 289 ft. of water
(8.8 Kg/cm² or 88 meters)

MAXIMUM OPERATING PRESSURE

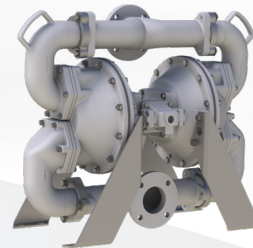
- 125 psi (8.6 bar)

DISPLACEMENT/STROKE

- .47 Gallon / 1.8 liter

SHIPPING WEIGHT

- Aluminum 88 lbs. (39.9kg)
- Cast Iron 130 lbs. (59kg)
- Stainless Steel 140 lbs. (63.5kg)
- *for cast iron center add 35 lbs. (15.9 kg)



HDF3-A/HDF4-A

SUCTION/DISCHARGE PORT SIZE

- HDF3-A: 3" ANSI 150# Style Flange
- HDF4-A: 4" ANSI 150# Style Flange

CAPACITY

- 0 to 310 gallons per minute
(0 to 1,173 liters per minute)

AIR DISTRIBUTION VALVE

- No-lube, no-stall design

SOLIDS-HANDLING

- Up to 3 in. (75mm)

HEADS UP TO

- 125 psi or 289 ft. of water
(8.8 Kg/cm² or 88 meters)

MAXIMUM OPERATING PRESSURE

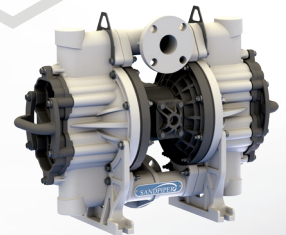
- 125 psi (8.6 bar)

DISPLACEMENT/STROKE

- 1.60 Gallon / 6.08 liter

SHIPPING WEIGHT

- HDF3-A 345 lbs. (151 kg)
- HDF4-A 415 lbs. (182 kg)



HD20F NON-METALLIC FLAP VALVE

SUCTION/DISCHARGE PORT SIZE

- 2" NPT (F)
- 2" BSPT (F)
- 2" ANSI / DIN Flange

CAPACITY

- 0 to 150 gallons per minute
(0 to 567 liters per minute)

AIR DISTRIBUTION VALVE

- No-lube, no-stall design

SOLIDS-HANDLING

- Up to 1.8 in. (45.7mm)

HEADS UP TO

- 100 psi or 231 ft. of water
(7 bar or 70 meters)

MAXIMUM OPERATING PRESSURE

- 100 psi (7 bar)

DISPLACEMENT/STROKE

- .50 Gallon / 1.9 liter

WEIGHTS

- Pump: 53 lbs. (24kg)
- Shipping: 70 lbs. (31.7kg)



5 YEAR LIMITED PRODUCT WARRANTY

5 Year Guarantee for defects in material or workmanship. See sandpiperpump.com/content/warranty-certifications for complete warranty, including terms and conditions, limitations and exclusions.

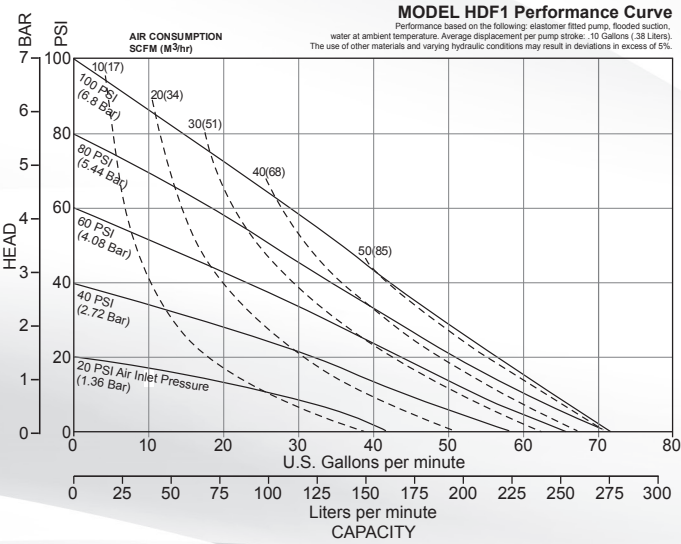


USE ONLY GENUINE SANDPIPER PARTS

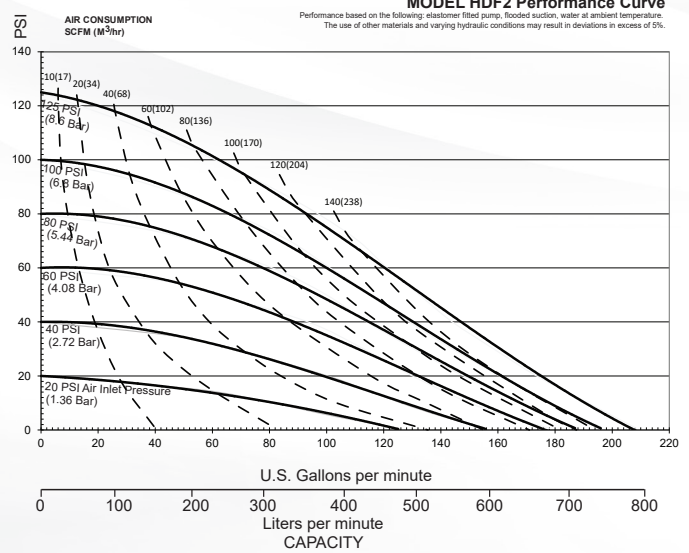
All certification, standards, guarantees & warranties originally supplied with this pump will be invalidated by the use of service parts not identified as "Genuine SANDPIPER Parts."

PERFORMANCE CURVES

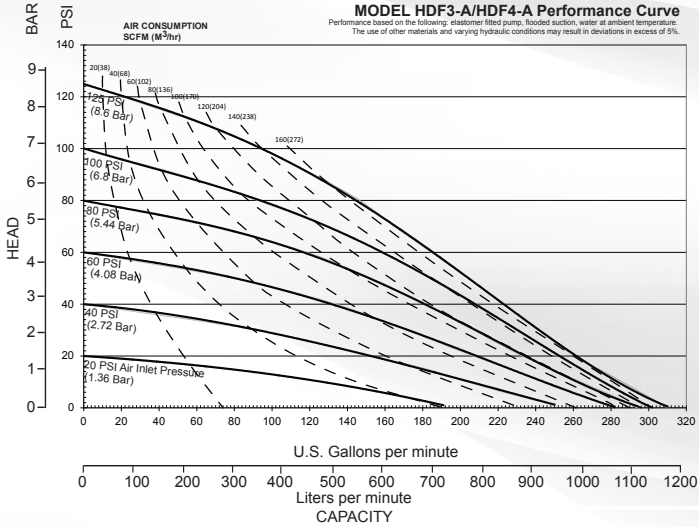
HDF1



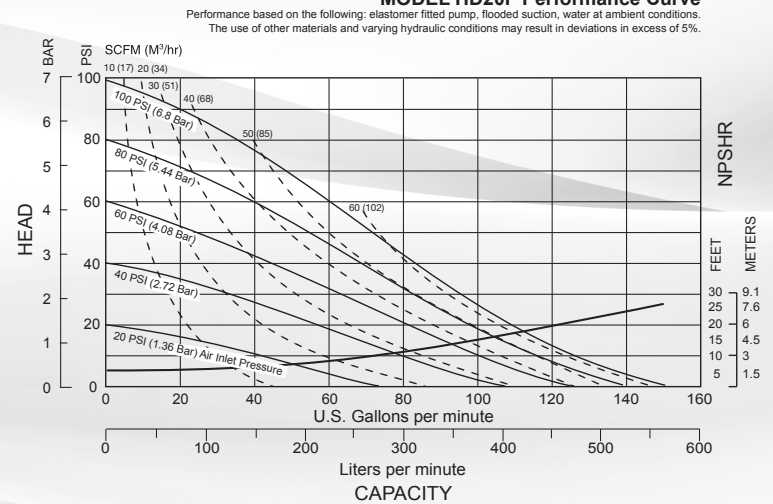
HDF2



HDF3-A



HD20F



COMMON MODELS for blood collection and transfer applications

Model Number	Pump Size	Max Flow	Wetted Material	Non-Wetted Material	Diaphragm & Flap Material	Porting
HDF1,DB2A.	1 inch 25 mm	70 GPM 265 LPM	Aluminum	Aluminum	Buna	FN PT
HDF1,DN2A.					Neoprene	
HDF1,DB2S.			Stainless Steel		Buna	
HDF1,DN2S.					Neoprene	
HDF2,DB6A.	2 inch 50 mm	208 GPM 787 LPM	Aluminum	Aluminum	Buna	
HDF2,DN6A.					Neoprene	
HDF2,DB6S.			Stainless Steel		Buna	
HDF2,DN6S.					Neoprene	
HD20F1PBSPNS000.	50 mm	150 GPM 567 LPM	Polypropylene	Polypropylene	Buna	ANSI/DIN Flange
HD20F1PNSPN000.					Neoprene	
HD20F1PBSPUS000.					Buna	
HD20F1PNSPUS000.					Neoprene	
HDF3,DB7.	3 inch	310 GPM 1,173 LPM	Aluminum	Aluminum	Buna	ANSI Flange
HDF3,DN7.	75 mm				Neoprene	
HDF4,DB3A.	4 inch				Buna	
HDF4,DN3A.	100 mm				Neoprene	